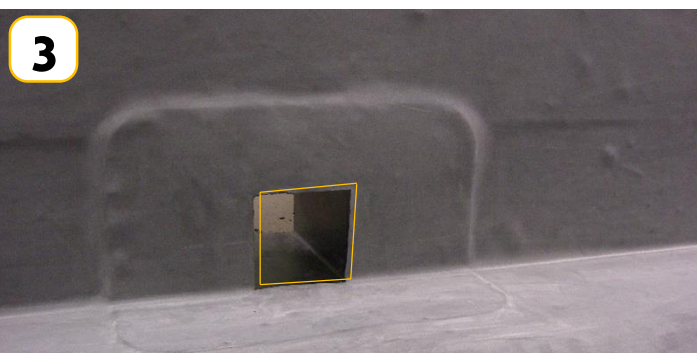


**1**

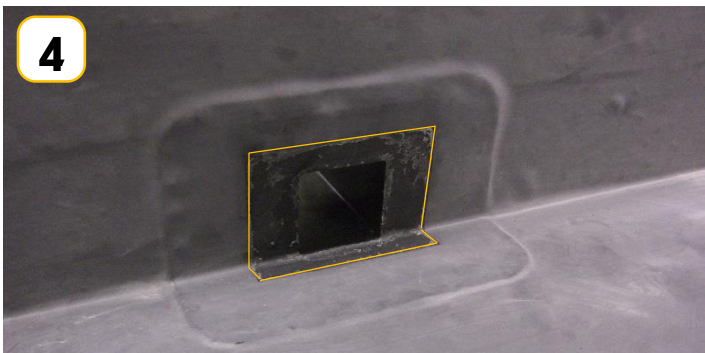
Apply contact adhesive to membrane and substrate

**2**

Bond membrane into position and use roller to apply pressure

**3**

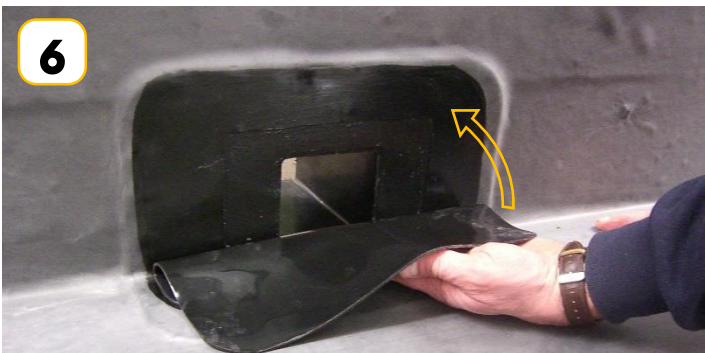
Cut out shape of hole

**4**

Cut back membrane from hole aperture 20mm

**5**

Apply primer to area AND inside of outlet

**6**

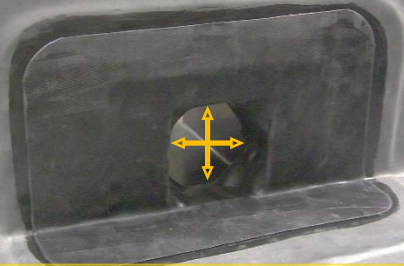
Cut Elasto-form tape to size and bond on to primed surface

7



Roller Elasto-form tape with seam roller, & cut small square hole

8



Carefully stretch Elasto-form and mould to the inside of the outlet

9



Cut additional piece of Elasto-form to fit inside of outlet and apply primer to bonding area

10



Insert Elasto-form and remove backing film

11



Apply pressure to tape using silicon seam roller

12



Insert leaf grate if required